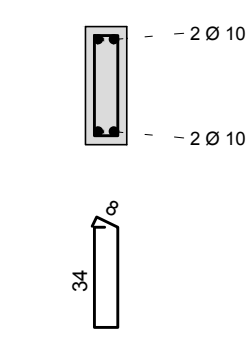
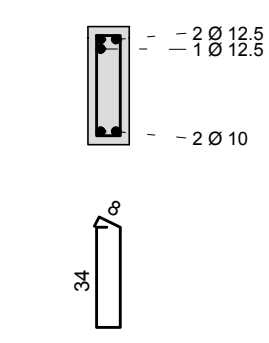
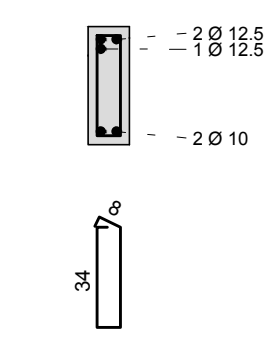
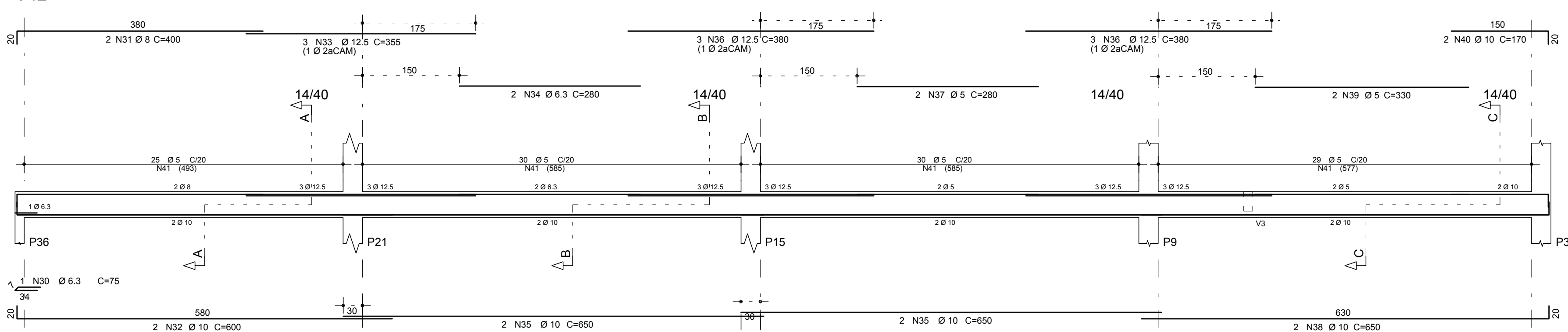
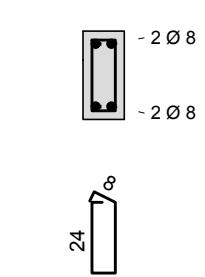
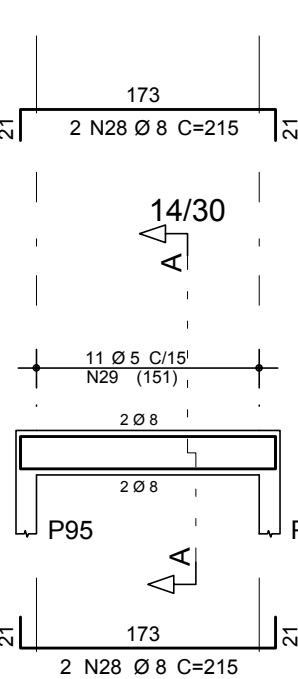
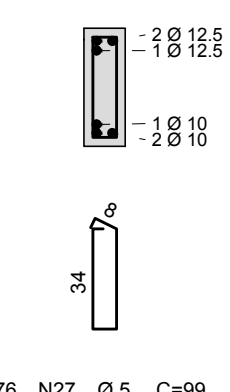
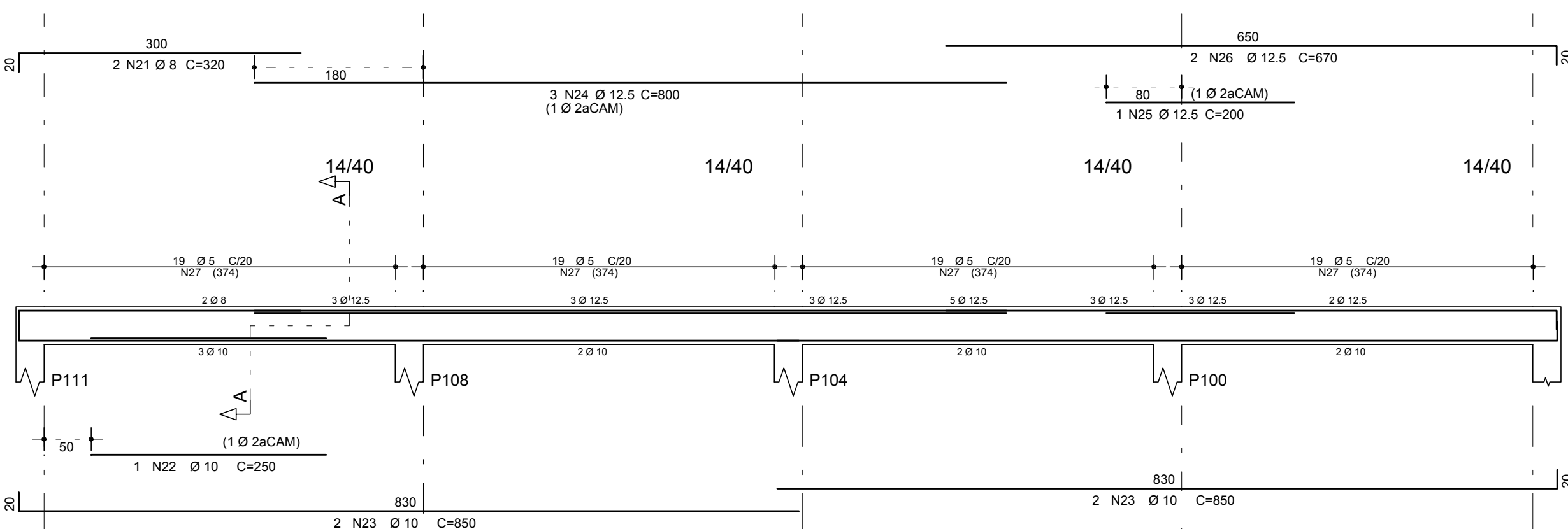
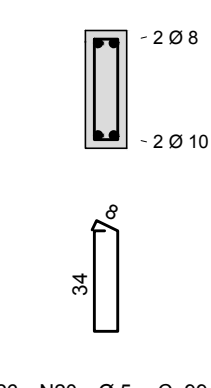
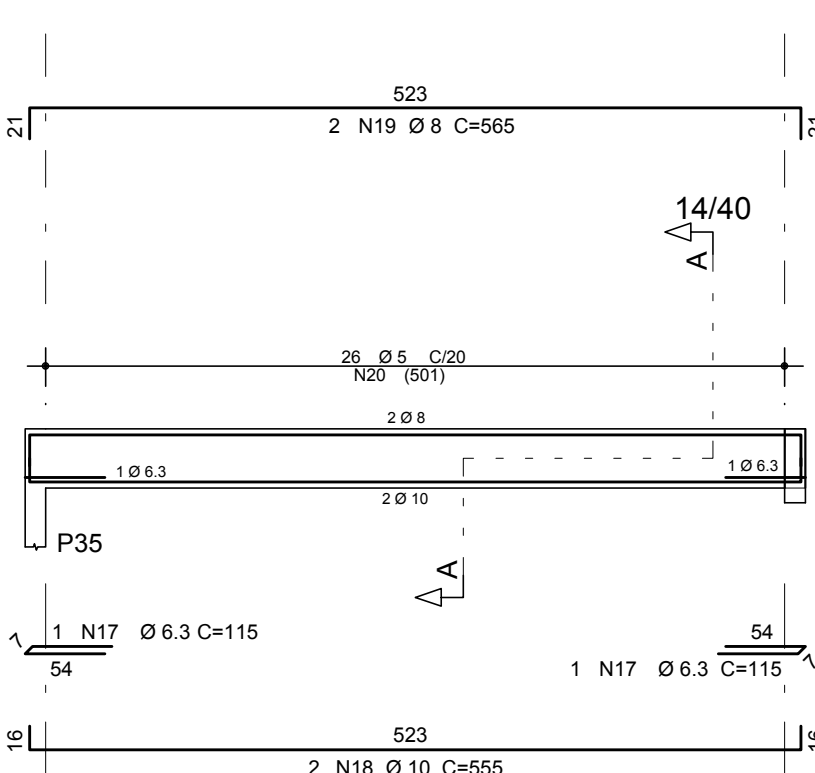
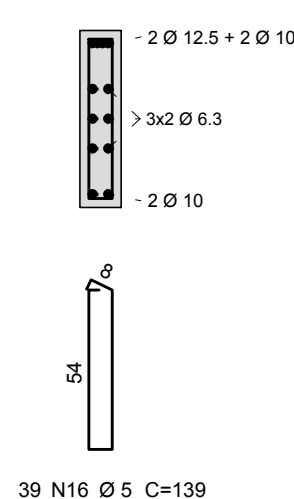
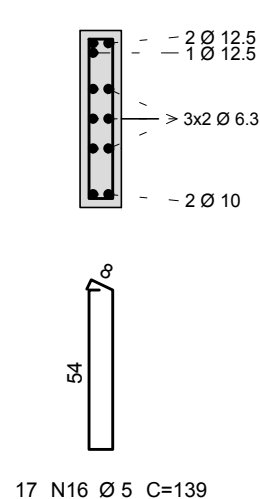
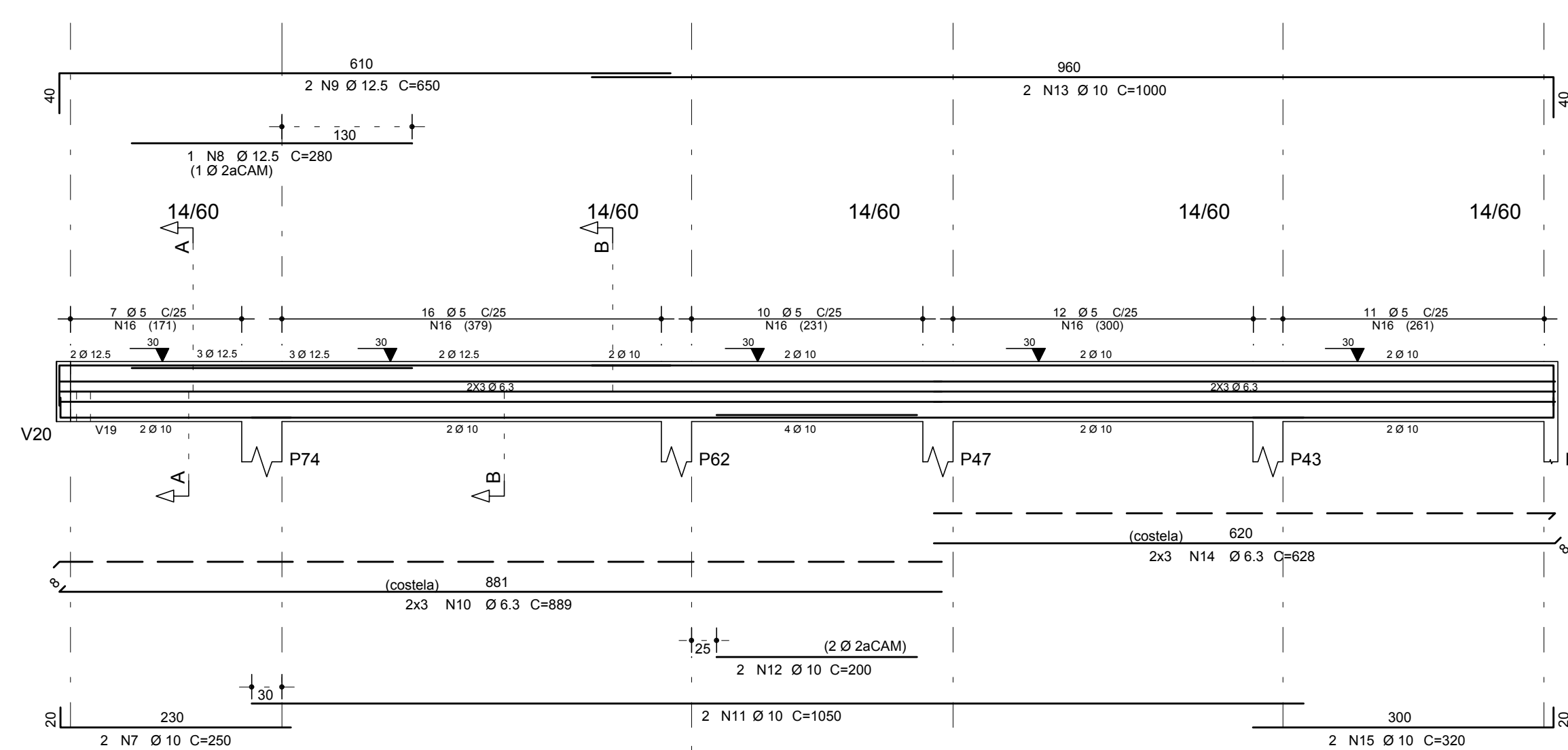
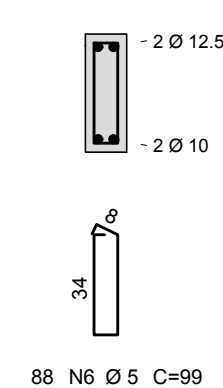
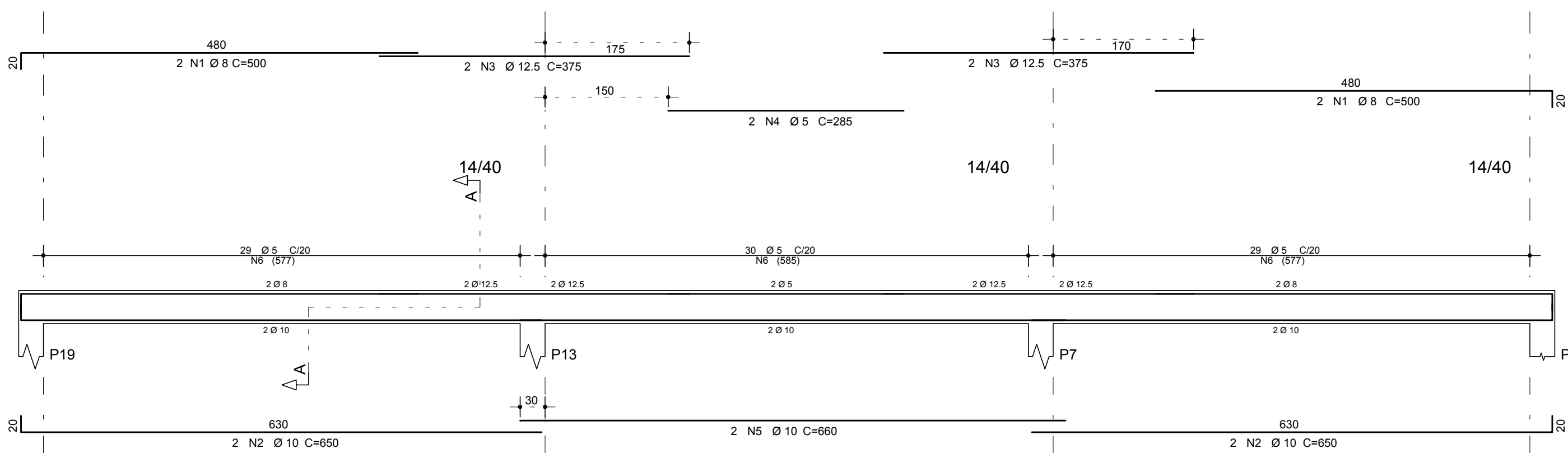


ESCALA 1/50
CORTES: ESCALA 1/25



RESUMO AÇO CA 50-60			
AÇO	BIT (mm)	COMPR (m)	PESO (kg)
60B	5	405	63
50A	6,3	100	24
50A	8	54	21
50A	10	198	122
50A	12,5	103	100
Peso Total	60B =	63 kg	
Peso Total	50A =	267 kg	

- 1-MEDIDAS EM CENTÍMETRO.
- 2-CONCRETO ARMADO, $f_{ck} \geq 25\text{MPa}$.
- 3-COBRIMENTO DAS ARMADURAS $c = 3,0 \text{ cm}$.
- 4-CONFERIR MEDIDAS NO LOCAL E COM A ARQUITETURA.

Fone: (089) 99975-9340 - e-mail: amengenharia.pi@hotmail.com

ARMAÇÃO DAS VIGAS V37 A V42

ESCOLA PADRÃO SEDUC – 10 SALAS DE AULA

RUA PROJETADA, S/N, FARTURA DO PIAUÍ – PI

GOVERNO DO ESTADO DO PIAUÍ

A1

14/20

DATA: JUNHO/2017

ESCALA: INDICADA